



7 Hereford Road

, Leicester, LE2 8HG

Asking Price £299,950

Berkley Estates are delighted to present this beautifully renovated and fully modernised three-bedroom end townhouse, perfectly positioned in the ever-popular Aylestone area of Leicester (LE2).

This superbly presented home offers an excellent opportunity for first-time buyers and investors alike. It is currently let to a sitting tenant and offered to the market with no upward chain, making the purchase nice and straightforward.

The property enjoys excellent access to local amenities, including reputable schools, everyday shops and leisure facilities, plus superb transport links to Leicester city centre, Fosse Park, and the major motorway network — ideal for commuting professionals and families.

Inside, the thoughtfully arranged accommodation begins with a welcoming entrance hallway complete with a convenient ground-floor W/C. This leads into a spacious, stylish open-plan lounge and dining area with a sleek, contemporary fitted kitchen — perfect for modern living and entertaining.

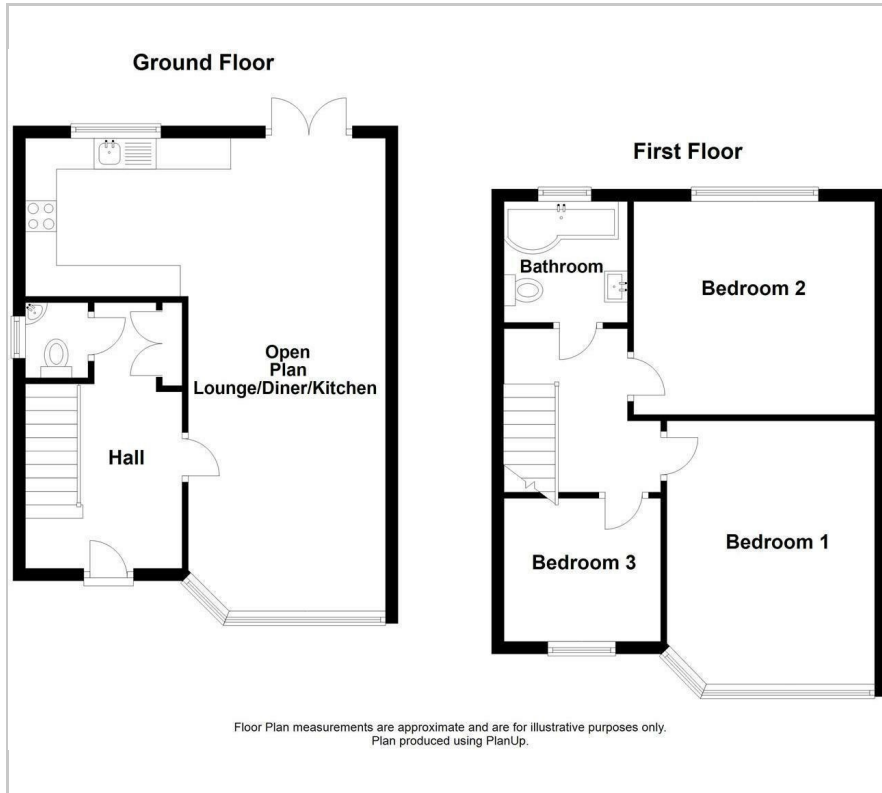
Viewing

Please contact our Berkley Leicester Office on 0116 2544755 if you wish to arrange a viewing appointment for this property or require further information.

3
 1
 1
 D



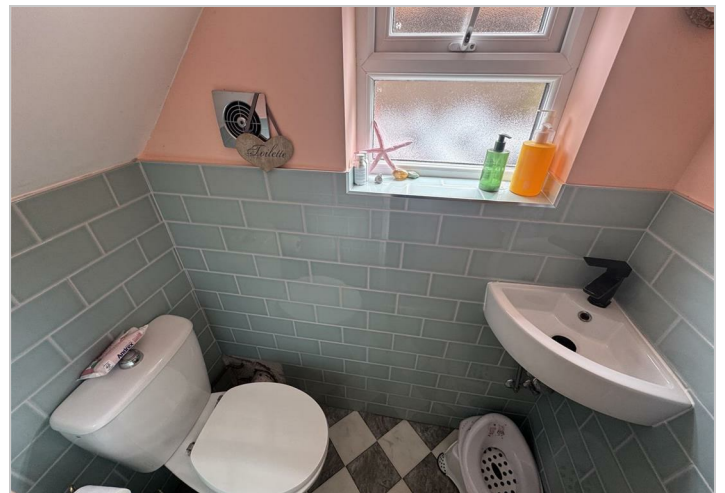
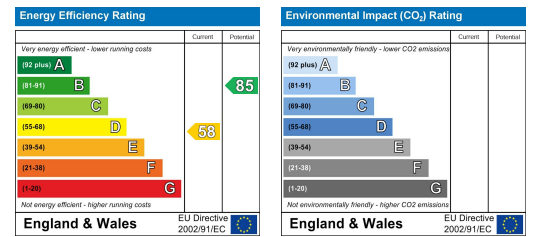
Floor Plan



Area Map



Energy Efficiency Graph



These particulars, whilst believed to be accurate are set out as a general outline only for guidance and do not constitute any part of an offer or contract. Intending purchasers should not rely on them as statements of representation of fact, but must satisfy themselves by inspection or otherwise as to their accuracy. No person in this firm's employment has the authority to make or give any representation or warranty in respect of the property.